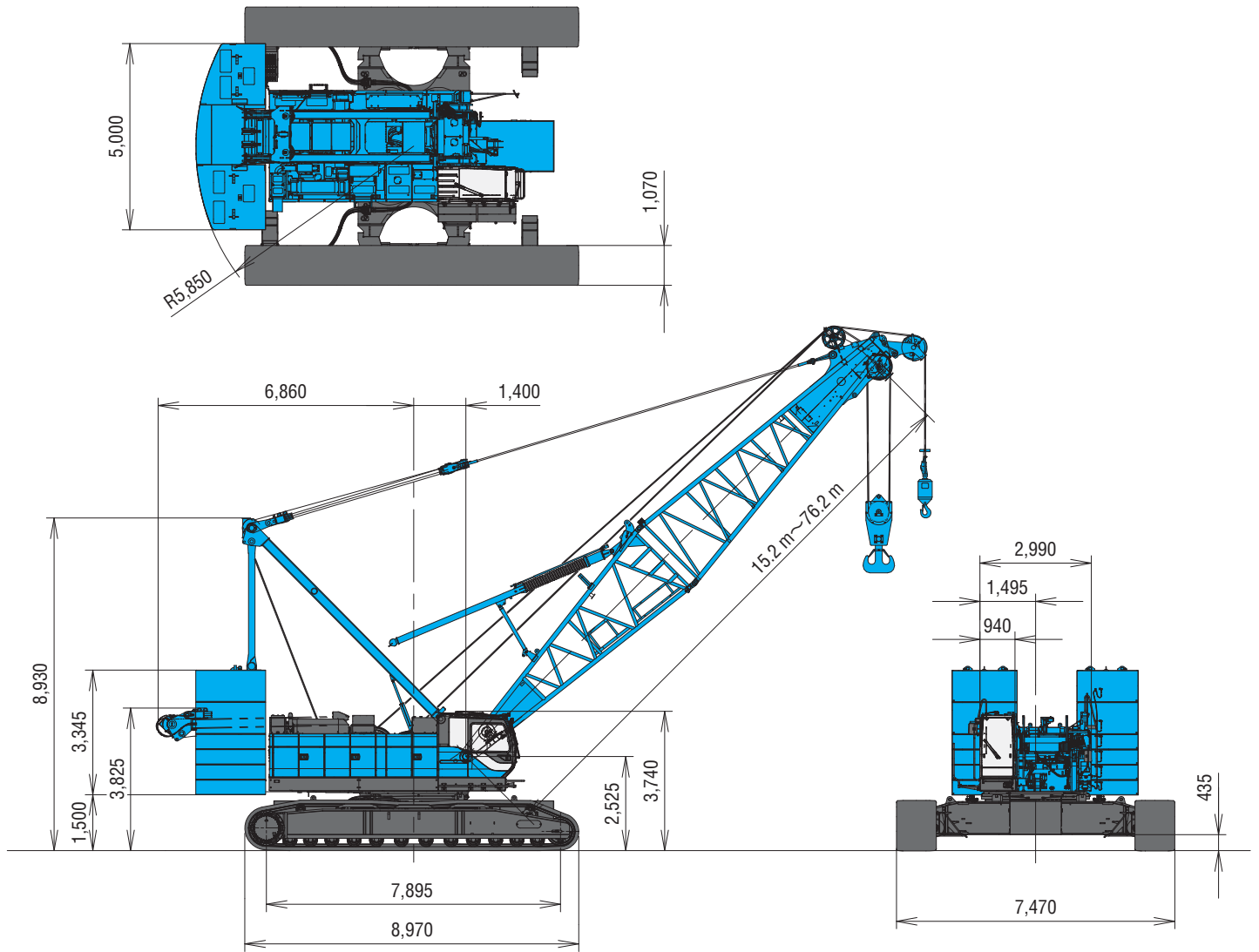
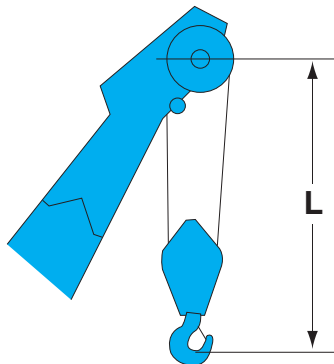


# GENERAL DIMENSIONS

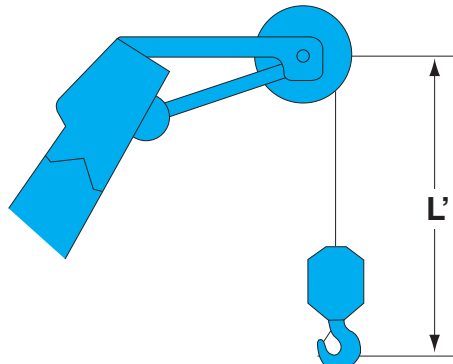
(Unit: mm)



## Limit of Hook Lifting

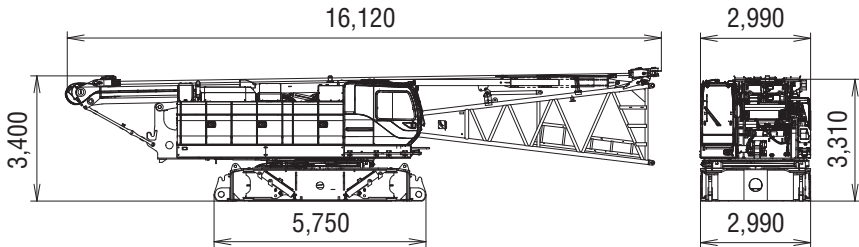
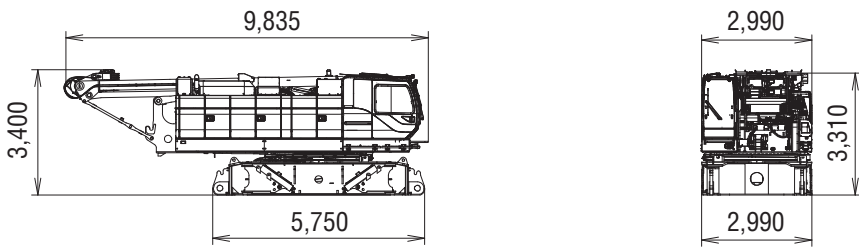
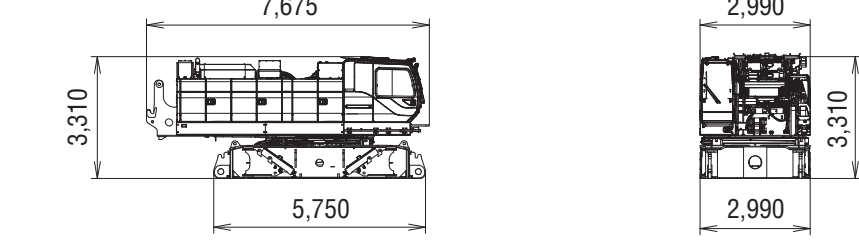
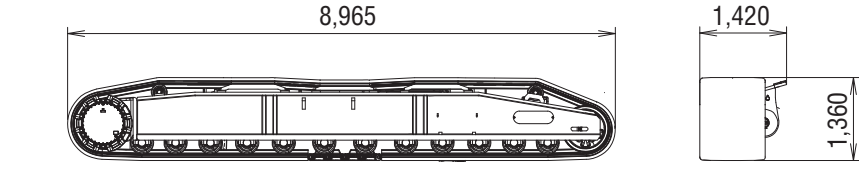


Hook	L
250 t hook	5.3 m
150 t hook	5.9 m
70 t hook	4.9 m
35 t hook	4.7 m



Hook	$L'$
Ball hook	3.2 m

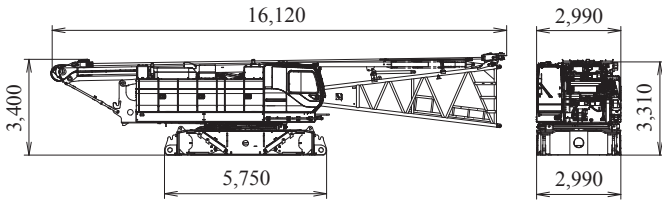
# TRANSPORTATION PLAN

Name	Dimension	Weight (kg)
<b>Base machine</b> <ul style="list-style-type: none"> <li>• Boom base</li> <li>• Gantry</li> <li>• Wire rope (Front / rear / boom hoist)</li> <li>• Crane backstop</li> <li>• Without crawler</li> </ul>		45,200
<b>Base machine</b> <ul style="list-style-type: none"> <li>• Gantry</li> <li>• Wire rope (Front / rear / boom hoist)</li> <li>• Without crawler</li> </ul>		40,200
<b>Base machine</b> <ul style="list-style-type: none"> <li>• Without crawler</li> <li>• Without gantry</li> <li>• Without wire rope (Front / rear / drum)</li> <li>• Without boom hoist winch</li> </ul>		32,000
Crawler		20,300

# PARTS AND ATTACHMENTS

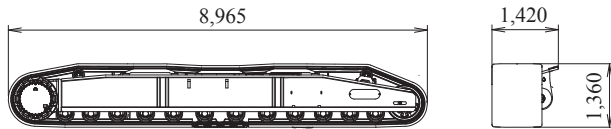
## Base Machine

Gantry, Wire rope (Front/rear/boom hoist)  
Crane backstop, Without crawler  
Weight: 45,200 kg Width: 2,990 mm



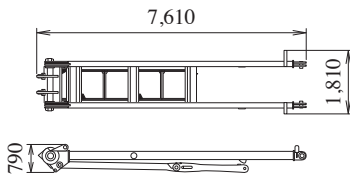
## Crawler

Weight: 20,300 kg



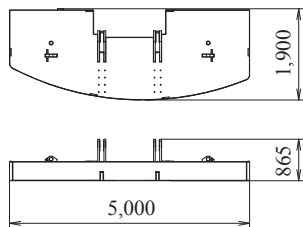
## Gantry

Weight: 2,830 kg



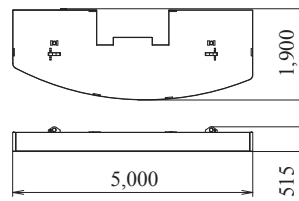
## Counterweight (1)

Weight: 13,500 kg



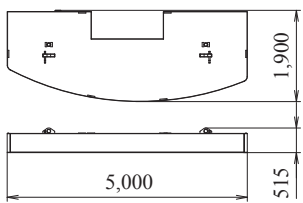
## Counterweight (2)

Weight: 13,200 kg



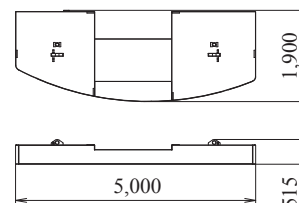
## Counterweight (3)

Weight: 13,200 kg



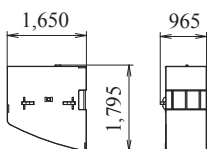
## Counterweight (4)

Weight: 13,190 kg



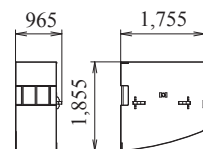
## Counterweight (L) (5) (7)

Weight: 10,080 kg



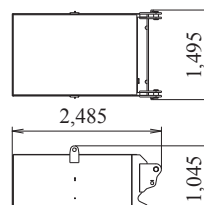
## Counterweight (R) (6) (8)

Weight: 11,925 kg



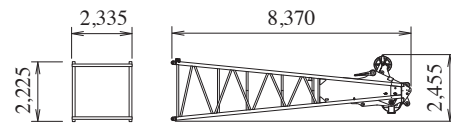
## Carbody Weight

Weight: 11,535 kg



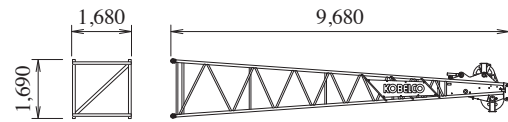
## Boom Top

Weight: 3,860 kg



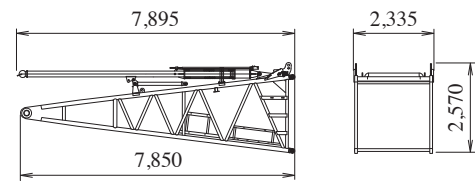
## Boom Top (for Long Boom and Tower Jib)

Weight: 1,120 kg



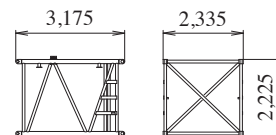
## Boom Base (with Backstop)

Weight: 4,180 kg



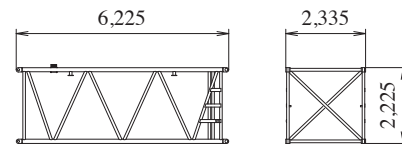
## 3.0 m Insert Boom

Weight: 740 kg



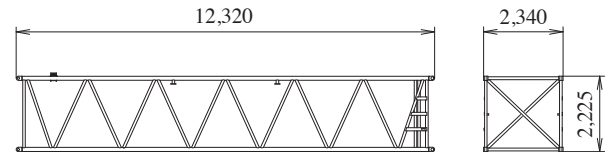
## 6.1 m Insert Boom

Weight: 1,210 kg



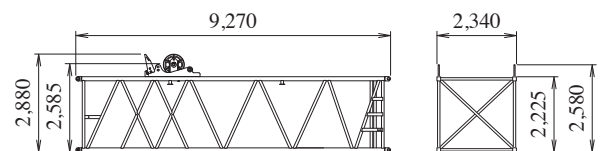
## 12.2 m Insert Boom

Weight: 2,150 kg



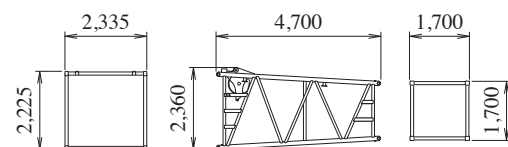
## 9.1 m Special Insert Boom for Tower

Weight: 2,200 kg



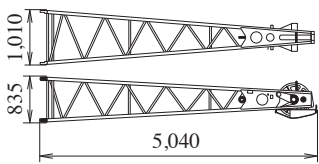
## Insert Tapered Boom

Weight: 1,160 kg



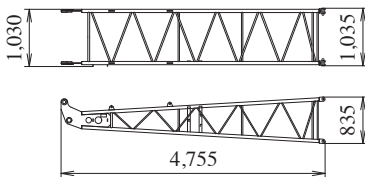
**Jib Top (for Crane)**

Weight: 315 kg



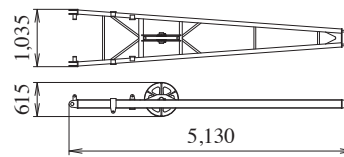
**Jib Base (for Crane)**

Weight: 210 kg



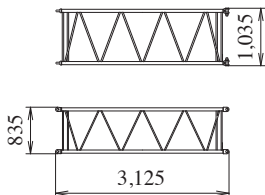
**Jib Strut**

Weight: 300 kg



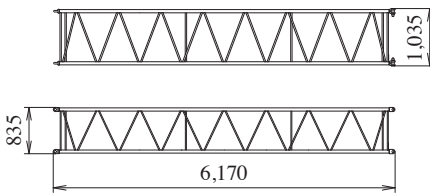
**3.0 m Insert Jib**

Weight: 110 kg



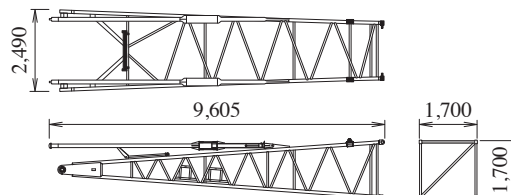
**6.1 m Insert Jib**

Weight: 190 kg



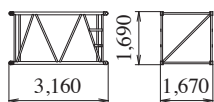
**Tower Jib Base**

Weight: 1,710 kg



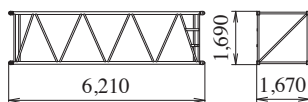
**3.0 m Insert Tower Jib**

Weight: 320 kg



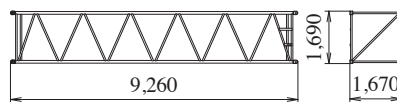
**6.1 m Insert Tower Jib**

Weight: 530 kg



**9.1 m Insert Tower Jib**

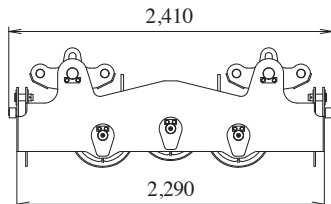
Weight: 740 kg



Attachments	Weight	Dimensions (L x W x H)
Relay jib	400 kg (with guy cables)	3,170 mm x 1,670 mm x 1,690 mm
Trans-lifter	395 kg	1,145 mm x 400 mm x 1,390 mm

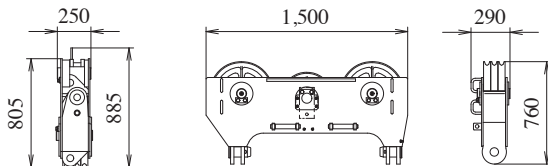
**Upper Spreader**

Weight: 670 kg



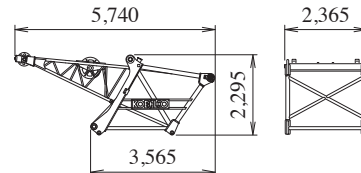
**Lower Spreader**

Weight: 400 kg



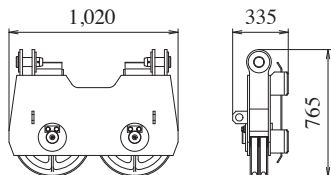
**Tower Cap**

Weight: 2,310 kg



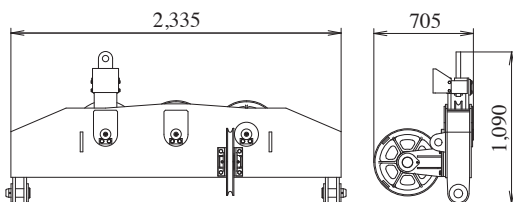
**Upper Spreader (for Tower Jib)**

Weight: 260 kg



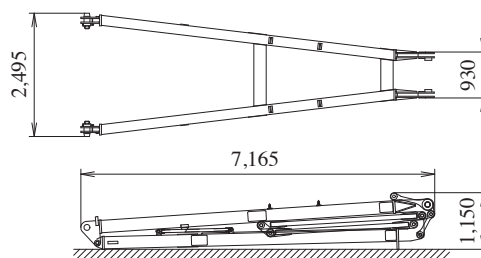
**Lower Spreader (for Tower Jib)**

Weight: 490 kg



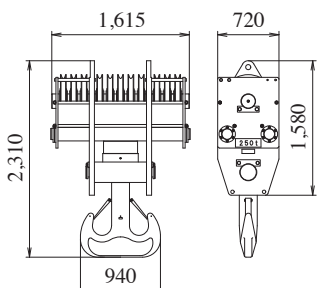
**Tower Strut**

Weight: 2,190 kg



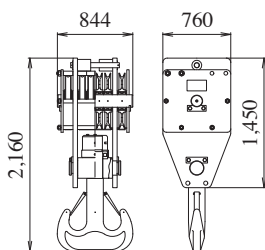
**250 t Hook**

Weight: 4,200 kg



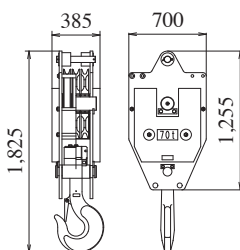
**150 t Hook**

Weight: 2,300 kg



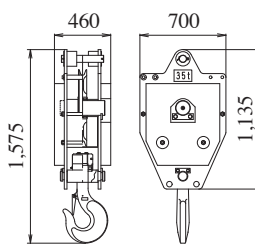
**70 t Hook**

Weight: 1,200 kg



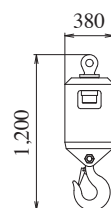
**35 t Hook**

Weight: 900 kg



**Ball Hook**

Weight: 450 kg



Note: Estimated weights may vary ± 2%.